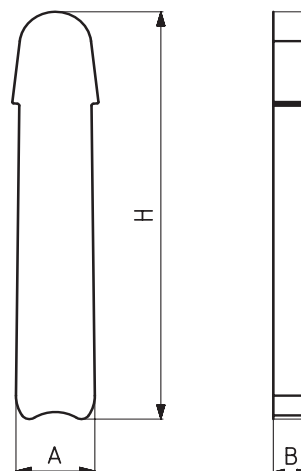


*921 Vedere Pagina Accessori (pagina 122)
*921 Voir Pages Accessoires (page 122)



Nuovo



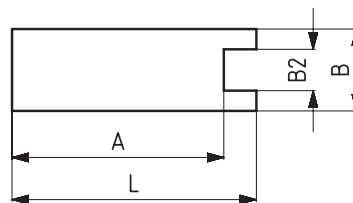
PROLUNGA IN METALLO
PROLONGATEUR



PROLUNGA IN METALLO / PROLONGATEUR

| CODICE (CODE) | MODELLO NR | MANOPOLA IN POLIURETANO (Poignée polyuréthane) | PESO (POIDS) (gr ±%) | A | B | H |
|---------------|------------|--|----------------------|------|----|-----|
| 220-2-06 | 222-232-2 | 921 - 2 | 25 | 11 | 5 | 66 |
| 220-2-06-C1 | 222-232-2 | 921 - 2 | 75 | 13,5 | 5 | 167 |
| 220-4-06 | 222-232-4 | 921 - 4 - 8 mm | 110 | 18 | 8 | 105 |
| 220-4-06 C1 | 222-232-4 | 921 - 4 - 8 mm | 235 | 20,5 | 8 | 207 |
| 220-6-06 | 222-232-6 | 921 - 4 - 10 mm | 150 | 18 | 10 | 114 |
| 220-6-06-C1 | 222-232-6 | 921 - 4 - 10 mm | 307 | 20,5 | 10 | 215 |

ÇENE UZATMA LAMASI
JAW EXTENSION BAR

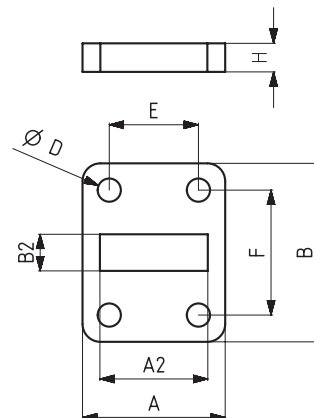


*951-G
Vedere Pagina Accessori (pagina 123)
*951-G
Voir Pages Accessoires (page 123)

PROLUNGA / PROLONGATEUR

| CODICE (CODE) | MODELLO NR | PESO (POIDS) (gr ±%) | A | B | B2 | L | H |
|---------------|------------|----------------------|----|----|------|----|----|
| 220-2-07 | 222-232-2 | 50 | 32 | 12 | 6,5 | 40 | 15 |
| 220-4-07 | 222-232-4 | 215 | 52 | 20 | 10,1 | 60 | 25 |
| 220-6-07 | 222-232-6 | 430 | 68 | 25 | 12,1 | 80 | 30 |

BASE
EMBASE



BASE / EMBASE

| CODICE (CODE) | MODELLO NR | PESO (POIDS) (gr ±%) | A | A2 | B | B2 | D | E~ | F~ | H |
|---------------|------------|----------------------|----|------|----|------|------|----|----|---|
| 232-2-08 | 232-2 | 105 | 40 | 15,5 | 50 | 6,5 | Ø6.5 | 25 | 35 | 8 |
| 232-4-08 | 232-4 | 95 | 40 | 24,5 | 50 | 10,5 | Ø6.5 | 25 | 35 | 8 |
| 232-6-08 | 232-6 | 145 | 50 | 28,5 | 60 | 12,5 | Ø8.5 | 30 | 40 | 8 |