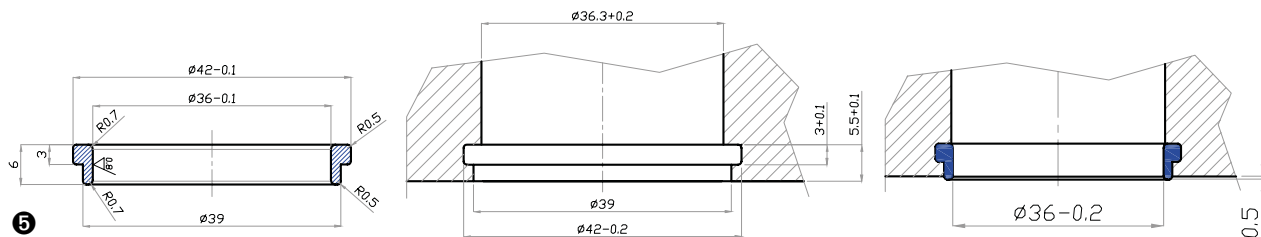
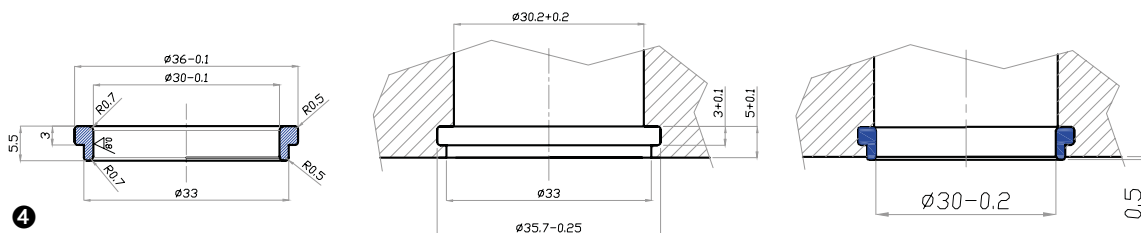
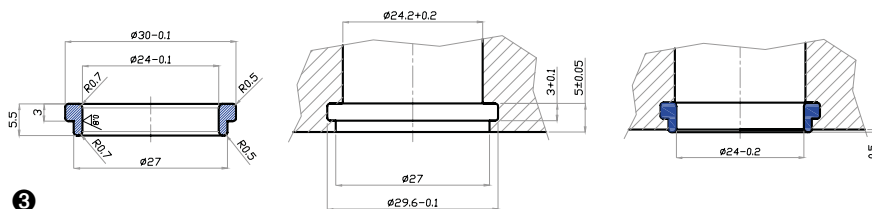
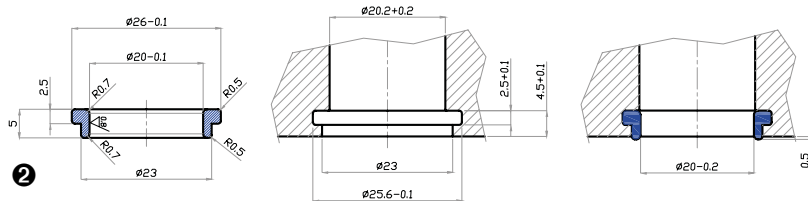
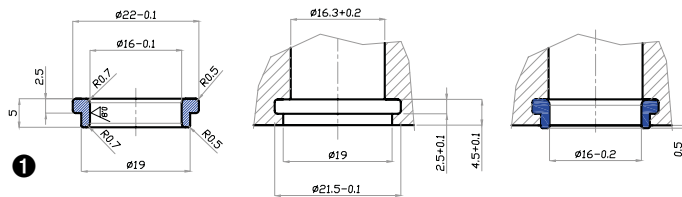


# Accessoires hygiéniques

Joints silicones internes



	CODE	DÉSIGNATION
1	MA-GI2216/3A	Joint interne D22x16
2	MA-GI2620/3A	Joint interne D26x20
3	MA-GI3024/3A	Joint interne D30x24
4	MA-GI3630/3A	Joint interne D36x30
5	MA-GI4236/3A	Joint interne D42x36

matière

Joint silicone alimentaire bleu.

note

Sur demande joint EPDM & NBR.